



Lumina WFB

SATINO®

5/64" uni saxony zijdeglans

100% PA IMPREL® FINESSE

2 draads getwijd & gethermofixeerd

RUG
Twinback

POOLHOOGTE
± 8 mm

TOTALE HOOGTE
± 11 mm

POOLGEWICHT
± 1.540 g/m²

TOTAAL GEWICHT
± 2.370 g/m²

AANTAL NOPPEN/M²
± 290 000

LICHTECHTHEID
≥ 5-6

WATERECHTHEID
≥ 4-5

WARMTEDOORLAATWEERST.
± 0,12 m² K/W

GELUIDSISOLATIE
± 28 dB

BRANDKLASSE
Cfl-s1 (EN 13501-1)
indien verkleefd

5/64" saxony uni aspect soyeux

100% PA IMPREL® FINESSE

retors 2 bouts & thermofixé

DOSSIER
Twinback

HAUTEUR DU VELOURS
± 8 mm

HAUTEUR TOTALE
± 11 mm

POIDS DU VELOURS
± 1.540 g/m²

POIDS TOTAL
± 2.370 g/m²

NOMBRE DE POINTS/M²
± 290 000

RÉSISTANCE À LA LUMIÈRE
≥ 5-6

RÉSISTANCE À LA LUMIÈRE
≥ 4-5

RÉSISTANCE THERMIQUE
± 0,12 m² K/W

ISOLATION AUX BRUITS D'IMPACT
± 28 dB

CLASSEMENT FEU
Cfl-s1 (EN 13501-1)
en pose collée

5/64" Uni-Saxony Seidenglanz

100% PA IMPREL® FINESSE

2fach gezwirnt & thermofixiert

RÜCKEN
Twinback

POLHÖHE
± 8 mm

GESAMTHÖHE
± 11 mm

POLGEWICHT
± 1.540 g/m²

GESAMTGEWICHT
± 2.370 g/m²

NOPPEN/M²
± 290 000

LICHTECHTHEIT
≥ 5-6

WASSERECHTHEIT
≥ 4-5

WÄRMEDURCHLASSWIDERST.
± 0,12 m² K/W

TRITTSCHALLDÄMMUNG
± 28 dB

BRANDKLASSE
Cfl-s1 (EN 13501-1)
bei vollflächiger Verklebung

5/64" plain saxony silky look

100% PA IMPREL® FINESSE

two-ply heatset

BACKING
Twinback

PILE HEIGHT
± 8 mm

TOTAL HEIGHT
± 11 mm

PILE WEIGHT
± 1.540 g/m²

TOTAL WEIGHT
± 2.370 g/m²

TUFT DENSITY/M²
± 290 000

LIGHT FASTNESS
≥ 5-6

WATER RESISTANCE
≥ 4-5

THERMAL RESISTANCE
± 0,12 m² K/W

SOUND INSULATION
± 28 dB

FIRE CLASS
Cfl-s1 (EN 13501-1)
only with full adhesion

Onder voorbehoud van wijzingen van de technische specificaties - Sous réserve de modifications techniques - Unter Vorbehalt von technischen Änderungen - All rights reserved to alter technical specification

EN14041

15

Balta Industries - Kanegemstraat 15 - BE 8700 Tielt
DOP: 1011#IE00CV
Textile Floor Covering EN1307
Notified body 2401

www.baltamediabank.com

PRODIS/GUT Nr. AE766120

EXCEPTIONALLY SOFT TO THE TOUCH
 SILK-LIKE SHIMMER
 FINEST CONSTRUCTION
 EXCELLENT WEAR PERFORMANCE
 BEST RESILIENCE

colours	14	20	30	34	36	44	49	52	62	92	96	98	173
ca 4m	•	•	•	•	•	•	•	•	•	•	•	•	•
ca 5m	•	•	•	•	•	•	•	•	•	•	•	•	•

EMISSIONS DANS L'AIR INTERIEUR

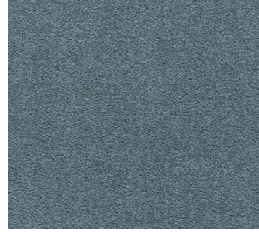
Lumina WFB



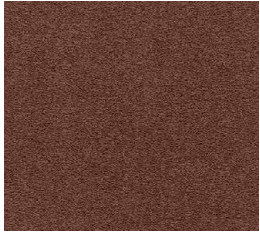
52



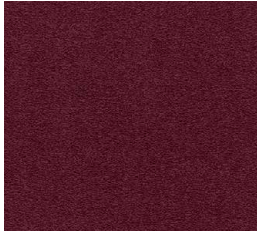
20



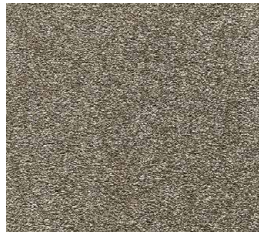
173



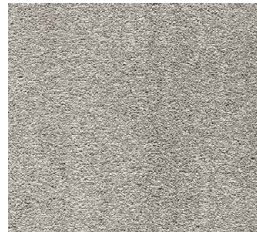
62



14



44



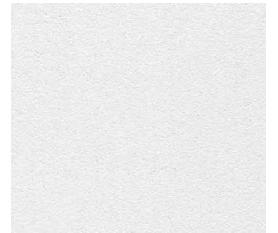
49



36



34



30

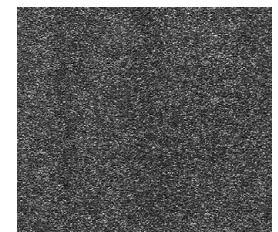
SATINO[®]



92



96



98

