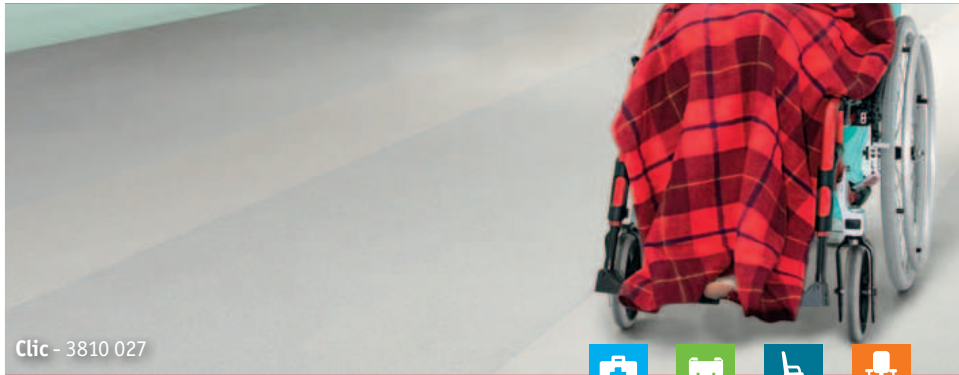


ACCENT EXCELLENCE 70 OPAL



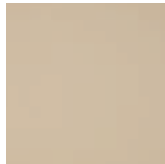
Clic - 3810 027



Clic



3810 035
3811 035



3810 033
3811 033



3810 030
3811 030



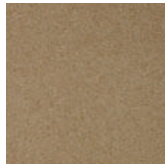
3810 027
3811 027



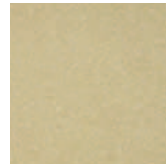
3810 036
3811 036



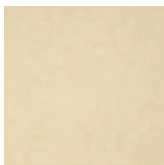
3810 037
3811 037



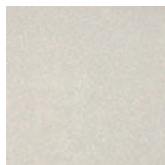
3810 029
3811 029



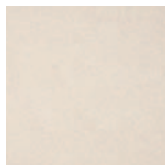
3810 028
3811 028



3810 025
3811 025



3810 032
3811 032



3810 031
3811 031



3810 034
3811 034

Wood



Natural

3810 024
3811 024



Natural beige

3810 021
3811 021



Natural

3810 022
3811 022

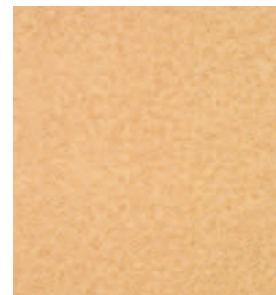


Natural dark

3810 020
3811 020

TECHNICAL DATA	STANDARDS	Accent Excellence 70 Opal
Classification		
Classification	ISO 10874 (EN 685) commercial industrial	Classes: 34 43
UPEC Classification	UPEC Classification NF UPEC.A+ certificate (NF 189)	U4P3E2/3C2 307-308.1
Characteristics		
Total thickness	ISO 24346 (EN 428)	2.00mm
Wear layer thickness	ISO 24340 (EN430)	0.70mm
Total weight	ISO 23997 (EN 430)	3 000g/m ²
PU treatment	-	TopClean
Abrasion group	EN 660-2	Group T: ≤ 2mm ³
Technical performances		
Residual indentation	Average measured value	≤ 0.10mm
	ISO 24343-1 (EN 433) requirement	
Reaction to fire	EN 13501-1	B _s S1 glued over any A2 _s or A1 _s substrate (concrete) and over any derivative wood substrate
Slip resistance	DIN 51130 EN 13893	R9 μ ≥ 0.30
Dimensional stability	ISO 23999 (EN 434)	≤ 0.10%
Furniture leg	EN 424	No damage
Castor wheel test	ISO 4918 (EN 425)	No damage
Curl resultant to heat	ISO 23999 (EN 434)	≤ 8mm
Electrostatic properties	EN 1815 EN 1081	≤ 2kV on concrete R1 > 10 ⁹ ohms
Chemical resistance	ISO 26987 (EN 423)	High resistance
Hygiene	-	Does not contribute to infection spreading
Thermal resistance Underfloor heating	EN ISO 10456	0.02m ² K/W Suitable
Light fastness	EN ISO 105-B02	≥ 6

The above information is subject to modifications for the benefit of further improvement (01/2014). For more detailed technical information, please contact Tarkett.



3810 026
3811 026

ACCENT EXCELLENCE 70 OPAL Clic / Wood

Main Product Features

- Colours combinations between all-over designs and uni shades
- Available in 2 and 4 meter widths

Surface Treatment



Sustainability Tag



(1) Progressively for all our professional vinyl products during 2014

Logistics Information



Available in rolls:
2m & 4m
Rolls length: 231m

Laying direction:



General Information



According to European Classification ISO 10874 (EN 685)



Play with the Room Designer